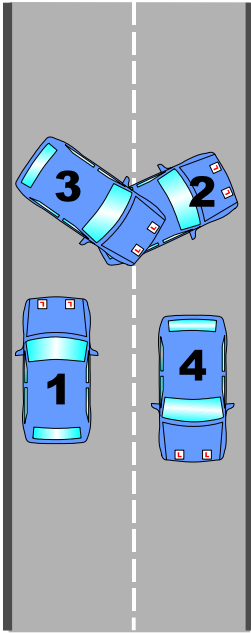


## TURN IN THE ROAD



1. When requested, pull up on the left. Apply the handbrake, select neutral and wait for instructions.

When asked to move off, prepare the car as you would do normally.

Take all round observations.

If the road is clear, release the handbrake and bring the clutch up a fraction. Keeping the clutch just above the biting point, steer briskly right until you reach full right lock.

When approximately two feet from the kerb, steer briskly left. Depending on the camber of the road, you may need to press the clutch to the floor and use the footbrake. Stop the car before overhanging the kerb. Apply the handbrake.
2. Prepare the car to move off as you would do normally only this time selecting reverse gear.

Take all round observations starting over the right shoulder.

If the road is clear, release the handbrake and bring the clutch up a fraction. Keeping the clutch just above biting-point, reverse slowly while steering briskly to the left. Keep looking over the left shoulder.

When approximately two feet from the kerb, change your observation to the right shoulder (look at the kerb) and start steering right. Depending on the camber of the road, you may need to press the clutch to the floor and use the footbrake. Stop the car before overhanging the kerb. Apply the handbrake.
3. Prepare to move off as you would do normally.

Look right - left - right. If the road is clear, release the handbrake and bring the clutch up a fraction. Keeping the clutch just above the biting point, steer to the right. Just as you go over the centre of the road, have one last look to the left.
4. When the car is parallel with the kerb and in the normal driving position, straighten the steering wheel, check the mirrors and proceed along the road.